

PhoneTree® Products for Servant Keeper® Users

Call 800.773.7570 for more information.



[The PhoneTree® 2100](#)

Our base model, the PhoneTree® 2100 is feature-rich and comes at a price for any budget. Operation is so simple, you can start calling within minutes of taking the unit out of the box.



[The PhoneTree® 2500](#)

The advanced PhoneTree® 2500 integrates e-mail capabilities, multiple simultaneous call sessions, full-featured multilingual support, and other additional features.



[The PhoneTree® 3500](#)

A premium model, the PhoneTree® 3500 offers the ability for custom-tailored messages to each recipient. For example: "This is City Library calling for [NAME], who checked out a book on [DATE 1], to be returned on [DATE 2]..."

PhoneTree® 2100

System Price: Call for a custom quote • 800.773.7570

The PhoneTree® 2100 is an all-digital USB product that has unlimited list capacity and can be expanded as your calling needs expand. The unit delivers up to 60 calls an hour using a single telephone line, upgradable to two lines.

With the PhoneTree® 2100, you have the system's most popular features, including: Autotasks and auto reports, duplicate name and phone number screening, pager call-back notification, the ability to offer up to 6 touch-tone replies, data-importing from existing lists, a built-in voice mailbox, CD-quality 16-bit sound, detailed reporting, and much more. The unit can even double as an answering machine connected to your computer! All these features are easily customized and accessed from an intuitive point-and-click interface.

Benefits of the PhoneTree® 2100:

Exclusive AVR-4™ Advanced Voice Recognition technology detects answering machines and "waits for the beep" to leave your message.

If the line is busy or no one is home, PhoneTree remembers to try again later, attempting busy lines sooner than those not answered, just as you would.

You can help make sure your calls aren't lost in the "kid zone" by having call recipients press "9" to play your message after hearing your greeting.

How the PhoneTree® 2100 Works:



1. PhoneTree® software reads your call list and job instructions from your PC.

2. Your messages are sent (automatically, or at your command).

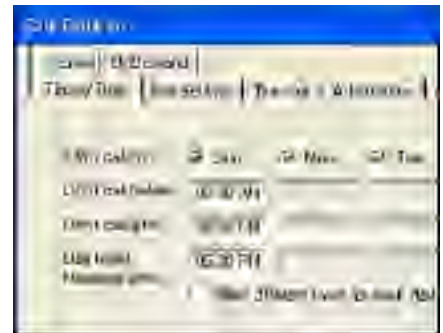
» [System Requirements](#)

To Order, or for More Information...

Call 800.773.7570 toll-free between 9:00 and 6:00 Monday-Friday EST to have a sales representative answer your questions, or [email](#) the PhoneTree sales department with any questions you may have.



Administration features let you control who uses your PhoneTree, sync data to a master list, and more.



Handy, intuitive call options give you total flexibility over how your calls are delivered.

PhoneTree® 2500

System Price: Call for a custom quote • 800.773.7570

Does your organization have members who can't make every meeting, yet need to stay involved? With the PhoneTree® 2500, you not only can keep them updated, but you can collect their input, as well. PhoneTree makes short work of otherwise tedious and time-consuming tasks like these in a minimal amount of time, thanks to features like multiple session and line capability.

Expanding on the features of the PhoneTree® 2100, the PhoneTree® 2500 is designed with larger organizations in mind, allowing simultaneous calling sessions, full network capability, and advanced multi-line capacity. When you need to send varying messages to large groups of people fast and in the most convenient manner possible, the PhoneTree® 2500 is the solution.

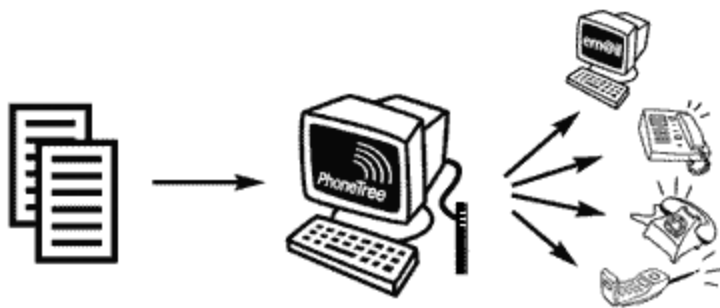
Benefits of the PhoneTree® 2500:

Send companion e-mails and text messages (to cell phones or any text-messaging device) along with your calls at the same time, giving your messages the best chance of getting through.

Full-featured multi-lingual capability allows you to send messages in different languages within one call session.

Choose which job is called first, in case of emergencies or other time-critical situations.

How the PhoneTree® 2500 Works:



1. PhoneTree® software reads your call list and job instructions from your PC.

2. Your messages are sent (automatically, or at your command).

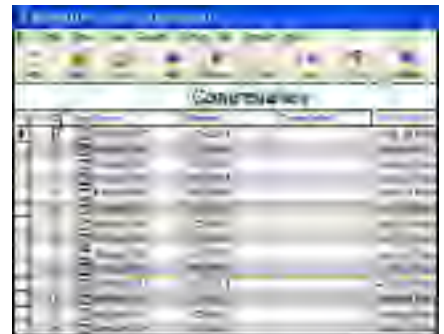
[» System Requirements](#)

To Order, or for More Information...

Call 800.773.7570 toll-free between 9:00 and 6:00 Monday-Friday EST to have a sales representative answer your questions, or [email](#) the PhoneTree sales department with any questions you may have.



Keep multiple 'PhoneTrees' set up and ready to use for contacting any specific group of people easily.



See how each call was answered and collect touch-tone replies from your list. Fully customizable by you.

PhoneTree® 3500

System Price: Call for a custom quote • 800.773.7570

The PhoneTree® 3500 is a full-featured, fully-customizable, and complete telephone messaging solution. Unique to the 3500 is the Flex Fields feature, which lets you custom-construct messages section-by-section, based on your existing data. Along with all the features of the PhoneTree® 2500, plus unlimited list capacity, unlimited calls per session, full remote access and custom call-in information lines, the PhoneTree® 3500 is an automated messaging powerhouse.

When you create your calling list, you can configure the PhoneTree® 3500's software to associate variables from your data with your own values (fields) to make the building blocks of your outgoing messages. This means that within a single call session, you can have a personalized message delivered to each individual, based on that person's unique data making complex projects such as reminders for directory photos and counseling session a snap. Plus, the PhoneTree® 3500 remembers your settings, and even scans for new Flex Fields with each list you import!

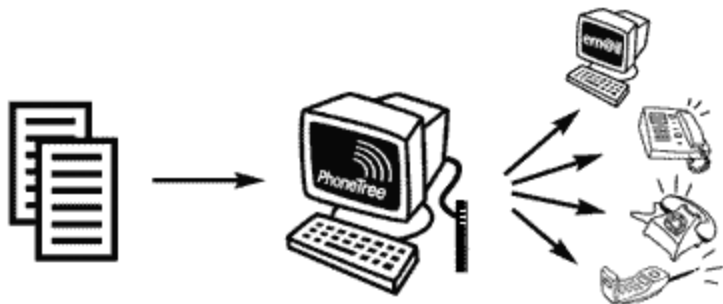
Benefits of the PhoneTree® 3500:

Flex Fields let you deliver flexible messages like, "Hello. This is Reverend Jones calling for [NAME] to remind you of [EVENT] on [DATE] at [TIME]."

If a call is at first unanswered, you can attempt alternate phone numbers (cell, pager, etc.).

Make a professional, memorable impression on those being called with highly-personalized messages, requiring only minimal setup.

How the PhoneTree® 3500 Works:



1. PhoneTree® software reads your call list and job instructions from your PC.

2. Your messages are sent (automatically, or at your command).

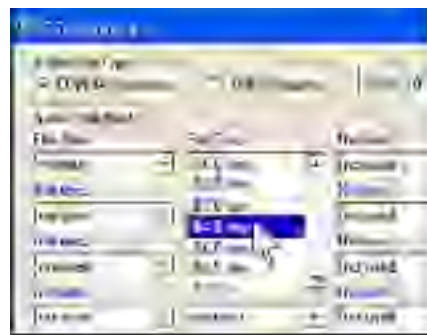
» [System Requirements](#)

To Order, or for More Information...

Call 800.773.7570 toll-free between 9:00 and 6:00 Monday-Friday EST to have a sales representative answer your questions, or [email](#) the PhoneTree sales department with any questions you may have.



Unique to the PhoneTree® 3500, our Flex Fields feature lets you create customized messages with ease.



Just import your data, select the message's content, and watch PhoneTree do the rest.

PhoneTree® Minimum System Requirements

A PhoneTree® system requires a minimum set of requirements from your computer in order to work correctly. If your PC has fewer than these requirements, your PhoneTree® system may not complete certain tasks well.

Systems include PhoneTree® hardware, software, and all cables. The following requirements are for PhoneTree systems containing up to 4 lines. For PhoneTree systems larger than 4 lines, contact us for recommended system requirements. If you're not sure PhoneTree will work with your computer, just call **800.773.7570** between 9:00 am and 6:00 pm, EST or **e-mail us** and we will be happy to provide any information that might be of assistance.

Minimum Computer Requirements

- Color monitor
- CD ROM drive
- Internet connection (for PhoneTree OnDemand or remote installation)
- USB port, minimum 1 USB port for each PhoneTree box. If all of your USB ports are in use, you may need to purchase a true dual (or quad) host controller card to provide additional ports.

Operating System

Your PC must have Microsoft Windows® 2000, XP or Server 2003 as the operating system. PhoneTree® is not compatible with Windows® 3.1, 95, 98, ME, NT or Mac OS.

PC Resources

Windows® Operating System	2000	XP	Server 2003
RAM	512 Mb	512 Mb	512 Mb
Processor Speed	1 GHz	1.7 GHz	2 GHz
Hard Drive Space*	500 mb (1 GB preferred)	500 mb (1 GB preferred)	500 mb (1 GB preferred)

*5GB required for PhoneTree Lab

To See Your PC's resources: Right-click on "My Computer" and select "Properties"

